



Rabbit anti Neuropilin-1 (pT916) Polyclonal Antibody

Alternative Name(s): Neuropilin-1; transmembrane receptor; VEGF165R; NRP1; CD304

Order Information

- **Description:** Neuropilin-1 (pT916)
- **Catalogue:** 620-330
- **Lot:** See label
- **Size:** 100ug/200ul
- **Host:** Rabbit
- **Clone:** nan
- **Application:** IHC(P), WB
- **Reactivity:** Hu, Bv

ANTIGEN PREPARATION

A synthetic peptide surrounding the epitope –LNTQS- with a phosphorylation site at Thr916. This sequence is identical among human and bovine.

BACKGROUND

The neuropilin-1 (Nrp1) is a multifunctional protein, identified principally as a receptor for the class 3 semaphorins and members of the vascular endothelial growth factor (VEGF) family, but it is capable of other interactions. It is a marker of regulatory T cells (Tr), which often carry Nrp1 and latency-associated peptide (LAP)-TGF-beta1 (the latent form). Nrp1 is reported to be expressed in breast cancer cells. The ischemia can increase neuropilin 1 protein expression in experimental rat brain as well. The phosphorylation of Nrp1 is essential for the Nrp1 activation.

PURIFICATION

The Rabbit IgG is purified by site-modified Epitope Affinity Purification.

FORMULATION

This affinity purified antibody is supplied in sterile Tris-buffered saline (pH7.2) containing antibody stabilizer

SPECIFICITY

This antibody recognizes ~130 kDa of human Neuropilin1 protein at the phosphorylation site of Thr 916. It does not cross react to non-phospho Neuropilin 1. The other species are not tested.

STORAGE

The antibodies are stable for 24 months from date of receipt when stored at –20oC to –70oC. The antibodies can be stored at 2oC-8oC for three month without detectable loss of activity. Avoid repeated freezing-thawing cycles.

APPLICATIONS/SUGGESTED WORKING DILUTIONS*

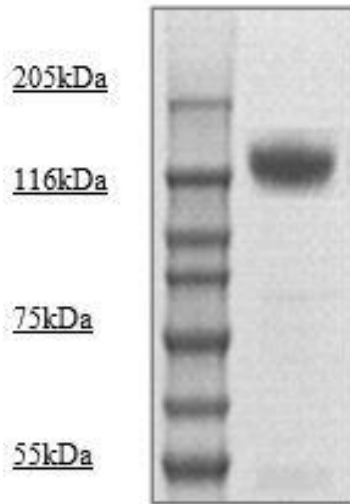
- Western Blot: 0.1-1 µg/ml
- ELISA: 0.01-0.1 µg/ml
- Immunoprecipitation: 2-5 µg/ml
- IHC: 2-10 µg/ml
- Flow cytometry: Not tested
- Molecular Weight: 140.0
- Positive Control: Kidney Tissue
- Cellular Location: Cell Membrane

*Optimal dilutions should be determined by researchers for the specific applications.

FOR RESEARCH USE ONLY.

AbboMax, Inc 2528 Qume Drive, Suite 8, San Jose, California 95131, USA
1 408-573-1898 (Tel). 1 408-573-1858 (Fax). www.abbomax.com info@abbomax.com

DATA ATTACHMENTS



Western Blot: The whole cell lysate from PMA stimulated U118MG immunoblotted by Rabbit anti-Neuropilin1 (pT916) (Cat#620-330) at 1:1000. An immunoreactive band at ~130kDa was observed.

REFERENCES

FOR RESEARCH USE ONLY.